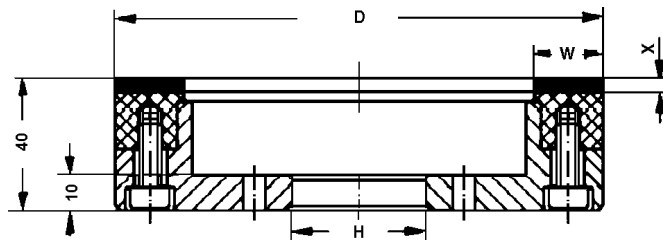


Grinding wheel shape according to FEPA

6A2 - Diamond grinding wheels

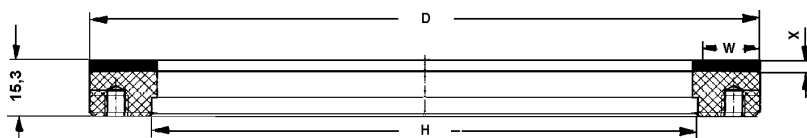


for EWAG RS 10, 12, 15 and ewamatic

Shape - D - W - X - H	Bond	ORDER No.	Remarks
1BZ 6A2 - 150 - 20 - 4 - 40	VF VFF VP	80142798 80131132 80142198	
Application For Polybloc grinding (polycrystalline diamond)		VF for rough grinding VFF universal for rough and finish grinding VP for polishing	

Grinding wheel shape according to FEPA

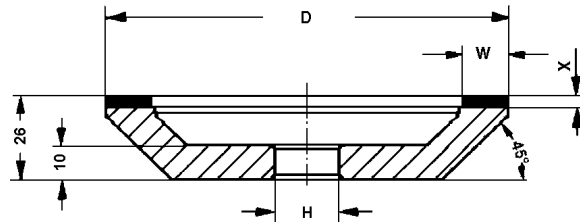
2A2T - Diamond grinding wheels



for EWAG RS 10, 12, 15 and ewamatic

Shape - D - W - X - U - H	Bond	ORDER No.	Remarks
1BZ 2A2T - 150 - 20 - 4 - 15 - 112	VFF	80137265	
Application For Polybloc grinding (polycrystalline diamond)		VF universal for rough and finish grinding	

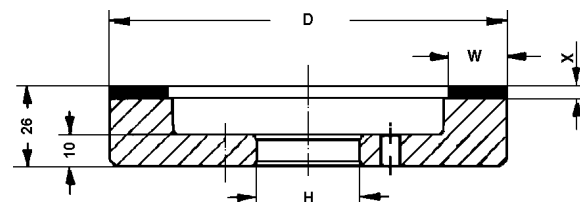
Grinding wheel shape according to FEPA
12A2 - Diamond grinding wheels



for KELCH SZ 32 K

Shape	- D - W - X - S° - H	Bond	ORDER No.	Remarks
1BZ 12A2	- 125 - 15 - 4 - 45 - 20	VFF	80141866	
Application For Polybloc grinding (polycrystalline diamond)		VFF universal for rough and finish grinding		

Grinding wheel shape according to FEPA
6A2 - Diamond grinding wheels



for Micro-Point

Shape	- D - W - X - H	Bond	ORDER No.	Remarks
1BZ 6A2	- 125 - 20 - 4 - 31.75	VFF	80141858	
Application For Polybloc grinding (polycrystalline diamond)		VFF universal for rough and finish grinding		