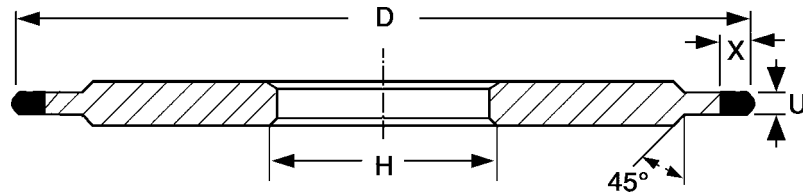




## Grinding wheel shape (not FEPA Standard)

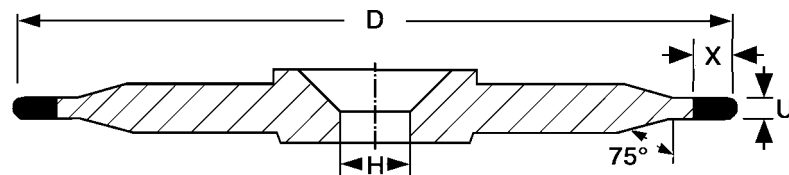
**700**



### For HSS tools

Shape	- D - U - X - H	Grit size	Bond	Concentration	ORDER NO.	Remarks
1K700	- 200 - 1.3 - 5 - 32	B107	KSS975	V300E	82139857	for oil
1K700	- 200 - 2 - 7 - 32	B107	KSS975	V300E	82139860	for oil
1K700	- 200 - 2.5 - 7 - 32	B107	KSS975	V300E	82145495	for oil
3K700	- 200 - 3 - 8 - 32	B107	KSS975	V300E	82145490	for oil
1K700	- 200 - 1.3 - 5 - 32	B126	KSS300 JY-63	V300E	82102262	for emulsion
1K700	- 200 - 2 - 7 - 32	B126	KSS300 JY-63	V300E	82090512	for emulsion
1K700	- 200 - 2.5 - 7 - 32	B126	KSS300 JY-63	V300E	82104673	for emulsion
1K700	- 200 - 3 - 8 - 32	B126	KSS JY-63	V300E	82098223	for emulsion

Application depending on software of machine manufacturer:  
For grinding tooth shape of HSS sawblades Loroach and older Schmidt-Tempo.



1K700	- 150 - 1.3 - 5 - 20	B126	KSS975	V300E	82169892	for oil
1K700	- 150 - 2 - 7 - 20	B126	KSS975	V300E	82156235	for oil
3K700	- 150 - 3 - 8 - 20	B126	KSS975	V300E	82156236	for oil
2K700	- 200 - 1.3 - 5 - 20	B126	KSS975	V300E	82169896	for oil
3K700	- 200 - 2 - 7 - 20	B126	KSS975	V300E	82169898	for oil

Application depending on software of machine manufacturer:  
For grinding tooth shape of HSS sawblades on new generation Schmidt-Tempo.